

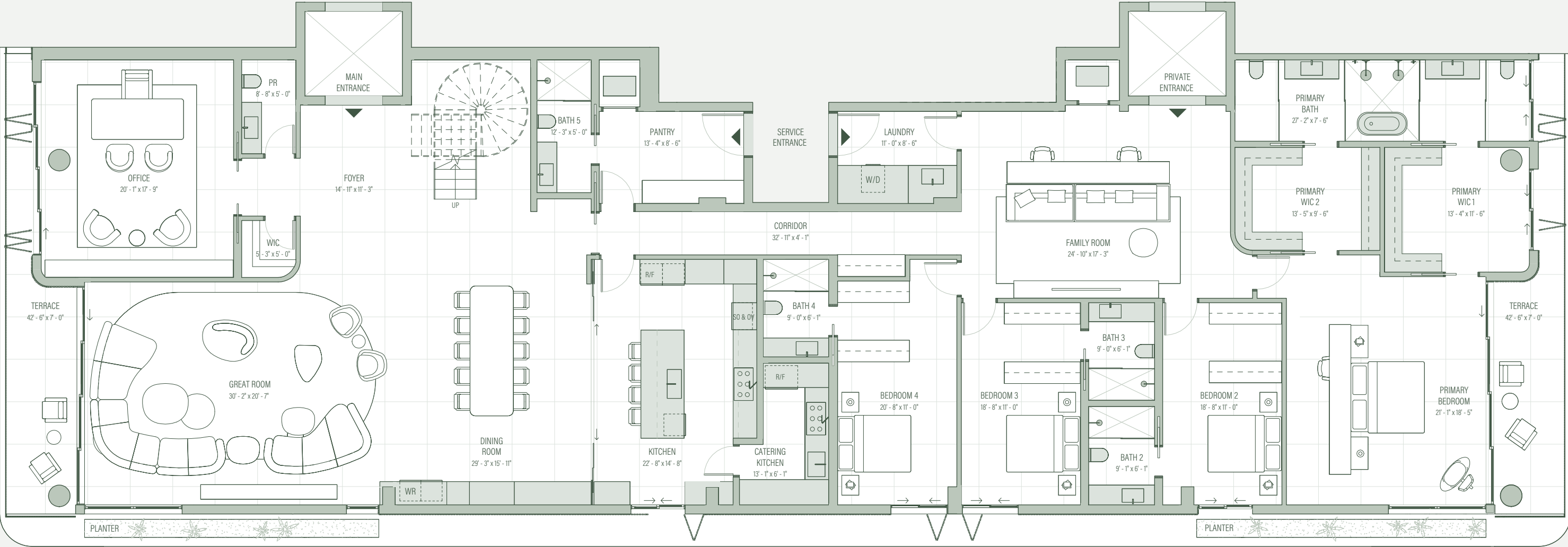
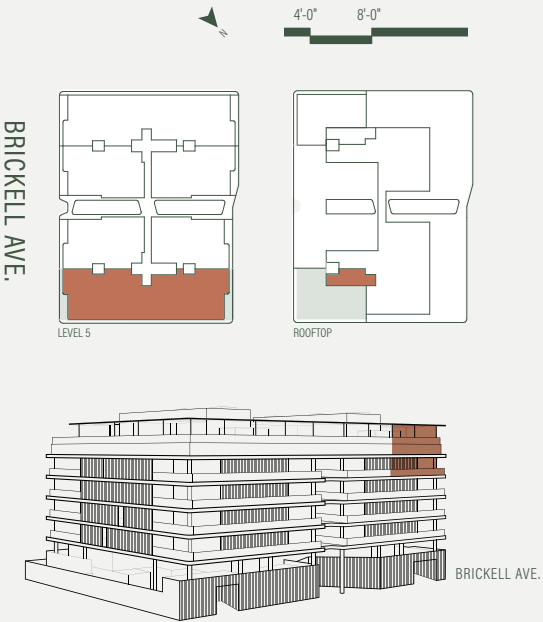
THE PENTHOUSES AT COLETTE

Level 5 and Rooftop  
Residence 57-PH  
4 Bedrooms | 6 Bathrooms | 1 Powder Room | Office | Family Room

Delivery provided by the developer

Total Interior: 5,916 SF / 550 SM  
Total Exterior: 2,290 SF / 213 SM  
Total: 8,206 SF / 763 SM

Level 5 Interior: 5,394 SF / 501 SM  
Level 5 Exterior: 426 SF / 40 SM  
Total Level 5: 5,820 SF / 541 SM



lifeatcolette.com. 305.376.7522. 1880 Brickell Ave, Miami, Florida 33129.

metadevelopment

Exclusive Sales and Marketing Partner  
DouglasElliman  
Development Marketing

EKLUND | GOMES  
THE EKLUND GOMES TEAM AT DOUGLAS ELLIMAN REAL ESTATE

There are various recognized methods for calculating the square footage of a Unit. The square footage and dimensions stated hereon are measured to the exterior boundaries of the exterior walls and the centerline of interior demising walls and in fact vary from the dimensions that would be determined by using the description and definition of the "Unit" set forth in the Declaration (which generally only includes the interior airspace between the perimeter walls and excludes interior structural components). For your reference, the area of the Unit, determined in accordance with those defined unit boundaries, is set forth in the Declaration. Note that measurements of rooms set forth on this floor plan are generally taken at the greatest points of each given room (as if the room were a perfect rectangle), without regard for any cutouts. Accordingly, the area of the actual room will typically be smaller than the product obtained by multiplying the stated length times width. The dimensions and square footage stated for this Unit floor plan are approximate and may vary with actual construction, and all floor plans and development plans are subject to change. All depictions of furnishings, appliances, built-ins, counters, soffits, floor coverings, lighting and other matters of detail, including, without limitation, items of finish and decoration, are conceptual only and are not necessarily included in each Unit. Consult the Developer's prospectus for information on what is offered with the Unit.